

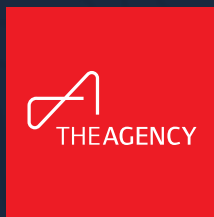


A DUNAMIS GROUP DEVELOPMENT.



SOLESTA

OCEANVIEW & GOLF | LOS CABOS RESIDENCES



LOS CABOS

WWW.SOLESTACABO.COM

THE HOME THAT FITS YOUR

lifestyle





PARADISE AWAITS

The city of San José del Cabo has an authentic Mexican atmosphere that is a charming counterpoint to the non-stop action of sister city Cabo San Lucas. Just 20 miles away from Cabo at the other end of the Tourist Corridor, you'll find a historic town of courtyard restaurants, charming architecture, boutiques, and a beautiful church facing the traditional town square.

It has flourished as a first-class destination with excellent amenities and services like first-class hospitals, restaurants, and luxury hotels thanks to its superb sunny climate and prime location.





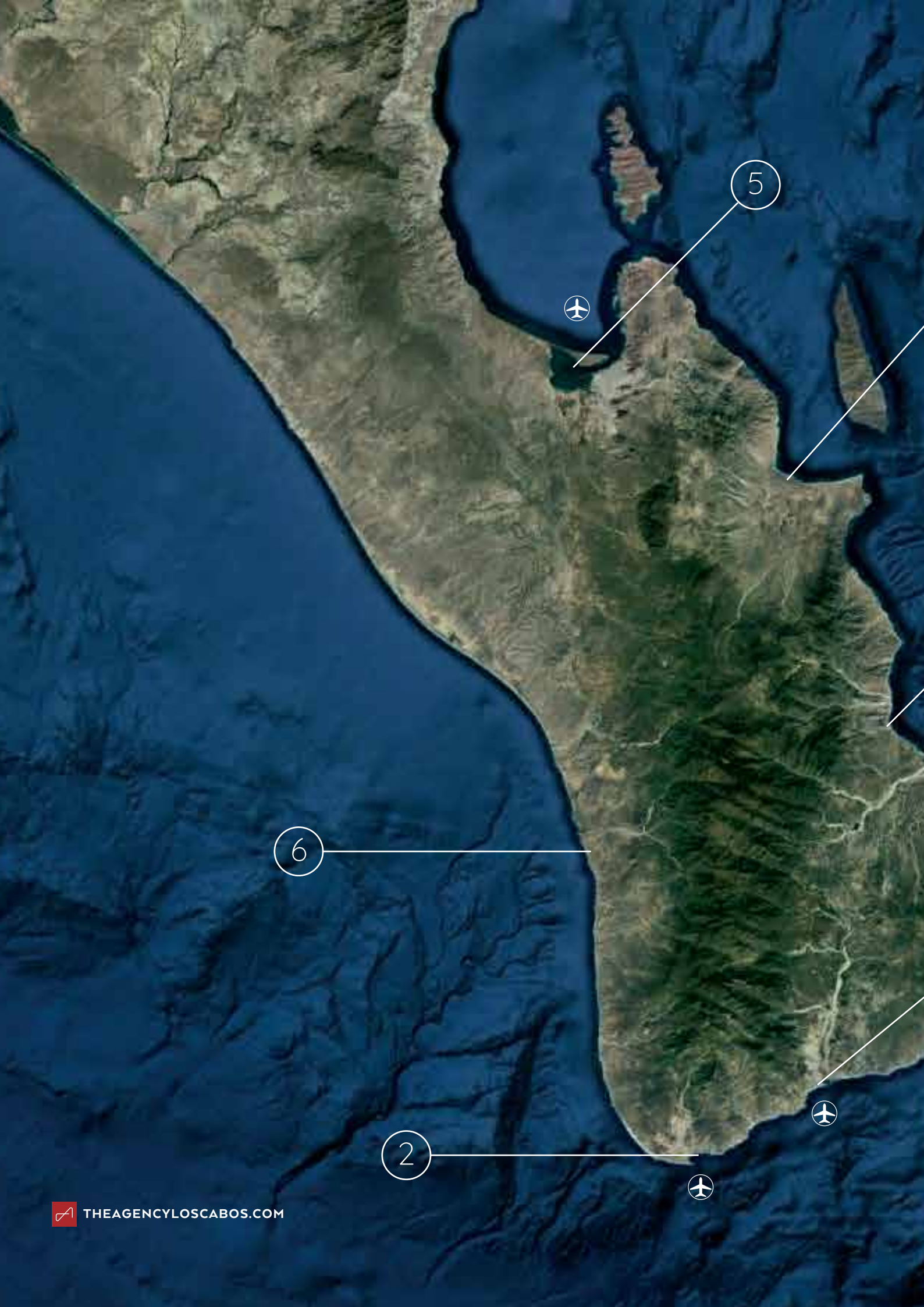






Solesta is an exclusive development just fifteen minutes away from Los Cabos International Airport, at the foot of the Sierra de la Laguna Mountains, within the Club Campestre San Jose.

Here you will find a privileged lifestyle surrounded by breathtaking views of the Sea of Cortes and the incredible golf course designed by Jack Nicklaus.



5



6

2



4

01/ San Jose Del Cabo

02/ Cabo San Lucas

03/ Los Barriles

04/ La Ventana

05/ La Paz

06/ Todos Santos

3

SOLESTA

1

From most major cities in North America, Los Cabos offers nonstop flights.

Los Angeles, CA 2h 30m

Vancouver, Canada 4h 30m

Dallas, TX 2h 40m

NYC 5h 30m



CLUB HOUSE

← CABO, SAN LUCAS

BEACH CLUB



AIRPORT



SOLESTA

TRANSPENINSULAR HIGHWAY

the

SOLESTA RESIDENCES

Perched on the highest hill of Club Campestre San Jose, the Solesta residences offer breathtaking views over the azure waters of the Sea of Cortes, lush fairways, and surrounding mountains. An inspired blend of natural beauty and stylish sophistication with meticulously designed options to fit every lifestyle. Enjoy an elevated perspective of San Jose.

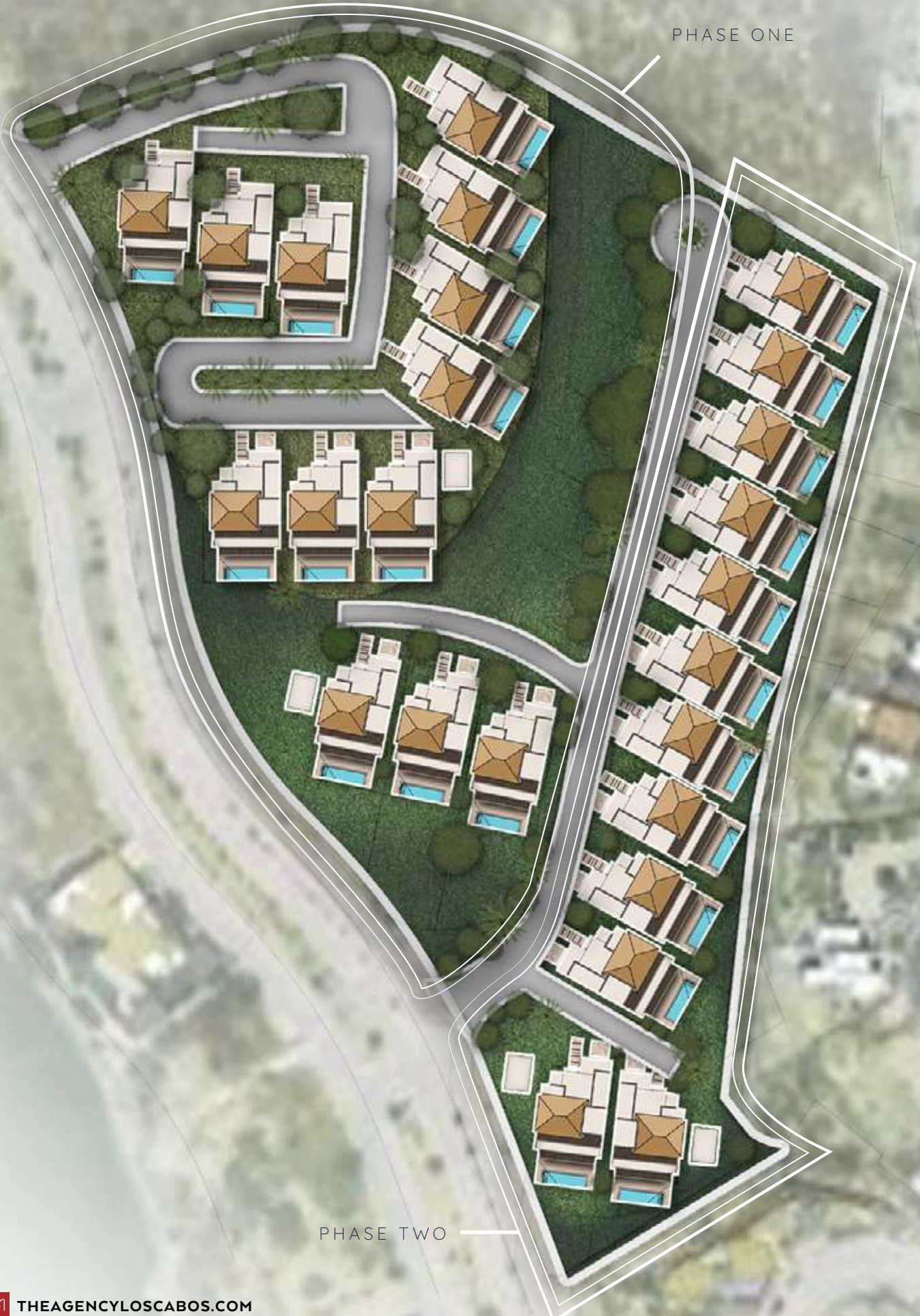


 SOLESTA

MASTER *Plan*

Our development features 25 units, each designed to take full advantage of the stunning natural surroundings, our development offers the perfect blend of luxury and tranquility.

PHASE ONE



PHASE TWO















Solesta residences are the perfect expression of luxury coastal life. All houses have 3 bedrooms on the top floor, and some have the option for guest “Casita” to fit the needs of your lifestyle.

With indoor outdoor living spaces ranging from over 5000 square feet to over 10,000 square feet over two-stories, these homes provide an ideal sanctuary.

They hit all the marks on location, amenities, and value. Chic interiors that flow seamlessly to the outdoor maximize living in one of the worlds’ best climates with the backdrop of world class views.

the
SOLESTA RESIDENCES

TWO-STORY RESIDENCE

3 BEDROOM + 3.5 BATHROOMS + CASITA

Ground Floor

144 m² / 1550 sqft.

Upper Level

153 m² / 1650 sqft.

Outdoor Area

140 m² / 1511 sqft.

Total A / C

303 m² / 3,258.45 sqft. to 330.72 m² / 3,861.26 sqft.

LOT SIZE

521 m² to 1,240 m² / 5608 to 13347 sqft.

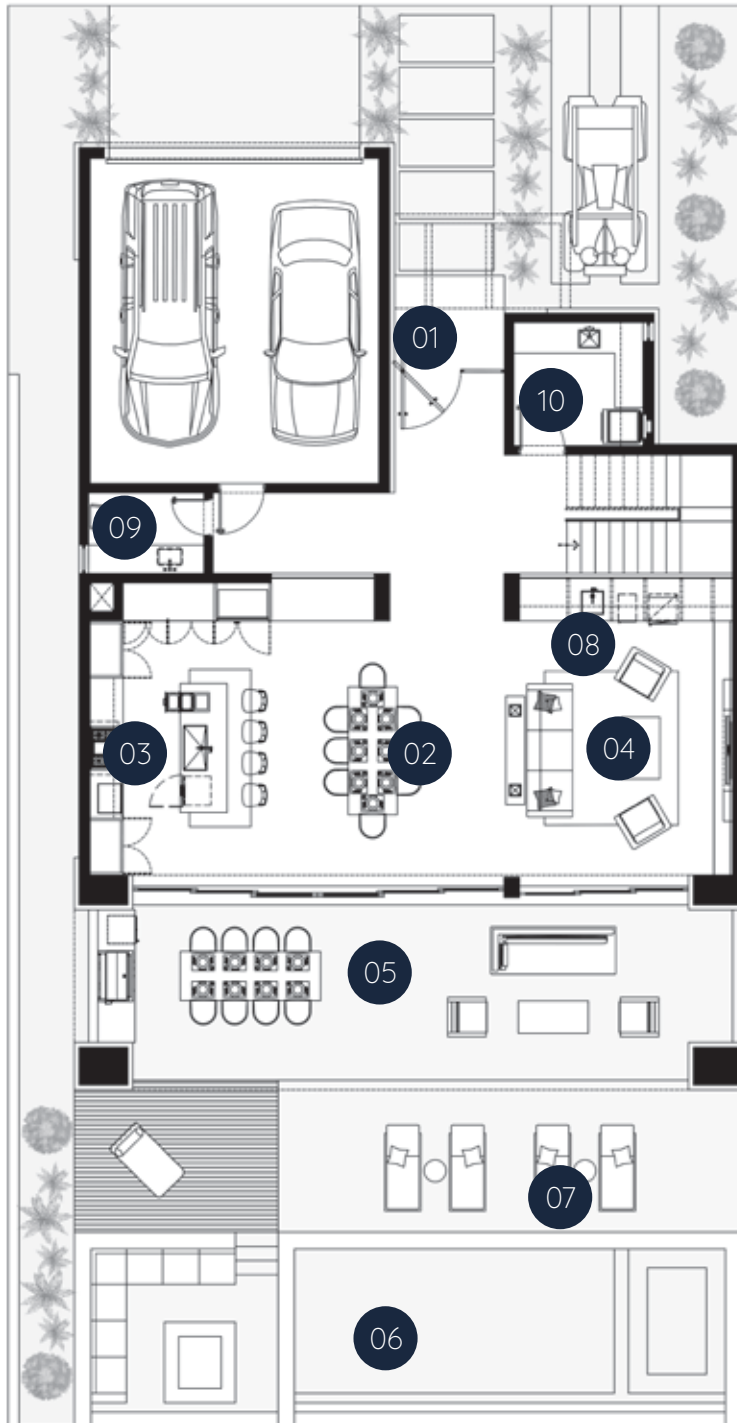
Lot surface may vary depending on location.



THE RESIDENCE

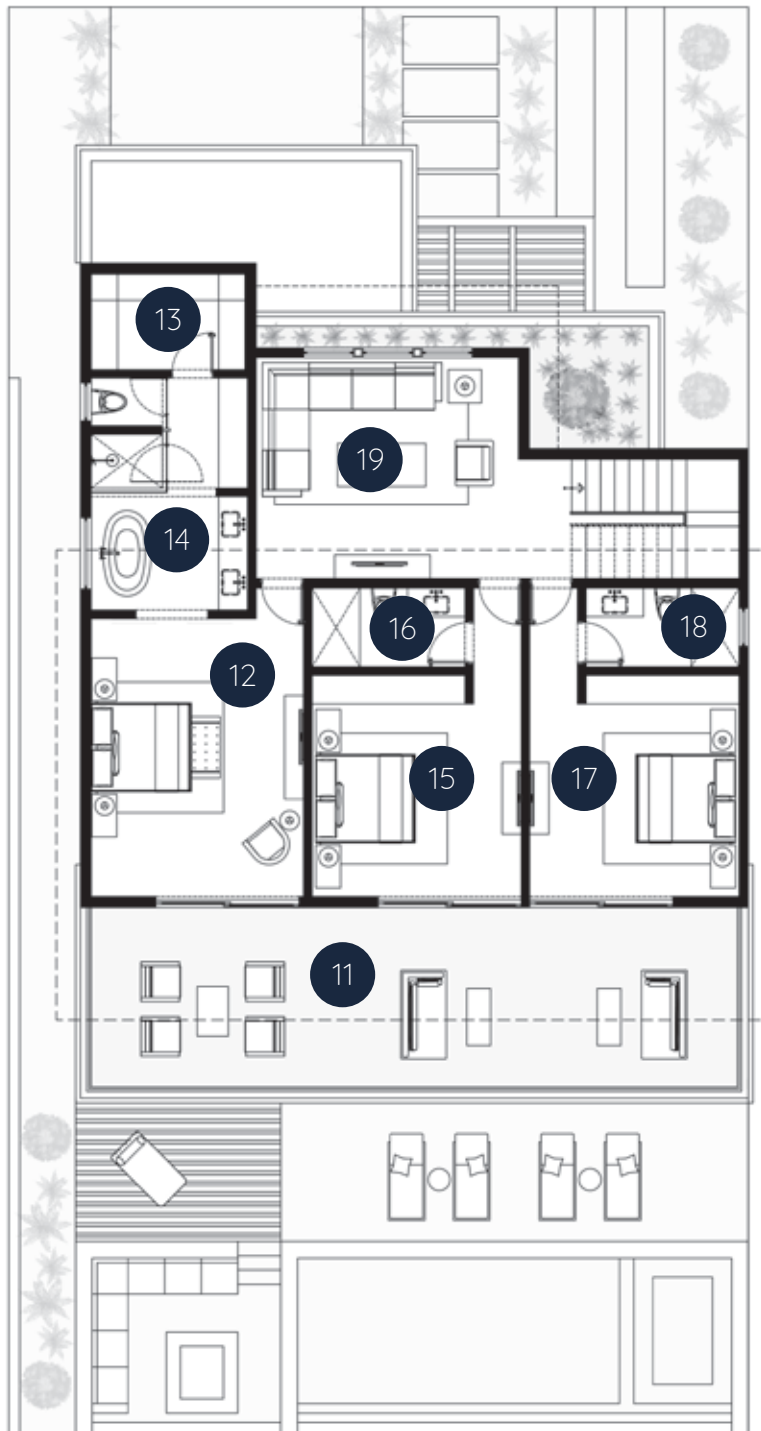
GROUND LEVEL

- 01 Entrance
- 02 Dinning Room
- 03 Kitchen
- 04 Living Room
- 05 Terrace & BBQ
- 06 Pool
- 07 Sundeck
- 08 Bar
- 09 Half Bathroom
- 10 Laundry Room



THE RESIDENCE
UPPER LEVEL

- | | | |
|-------------------|---------------------|-------------------|
| 11 Upper Terrace | 14 Primary Bathroom | 17 Third Room |
| 12 Master Bedroom | 15 Second Room | 18 Third Bathroom |
| 13 Walk-in Closet | 16 Second Bathroom | 19 Family Room |





A vertical decorative element on the left side of the page, featuring a blue and white geometric pattern with a central V-shape, resembling a traditional textile or wall treatment.

THE RESIDENCE

CASITA

The residence is designed to provide the ultimate in comfortable living. One of its most unique features is the inclusion of a guest casita. This separate, detached structure can serve a variety of purposes, making it an ideal choice for those looking to create an idyllic home office, game room, or gym. Whether you're looking to work from home in peace and quiet, entertain guests in style, or stay active and fit, Solesta guest casita offers endless possibilities.





THE RESIDENCE

PREMIUM FINISHES

KITCHEN

MDF 19 mm with super matt gray melamine and wood type.

COUNTERTOPS

Antolínj, technological stone cladding.

WOODWORK

Melamine and full closets.

INTERIOR

Lisboa Marble

EXTERIOR

Travertine

APPLIANCES

Subzero, Wolf.

WINDOWS

Floor to ceiling 150 Española 6mm Tempered Glass

FAUCETS

Designer faucets & fixtures

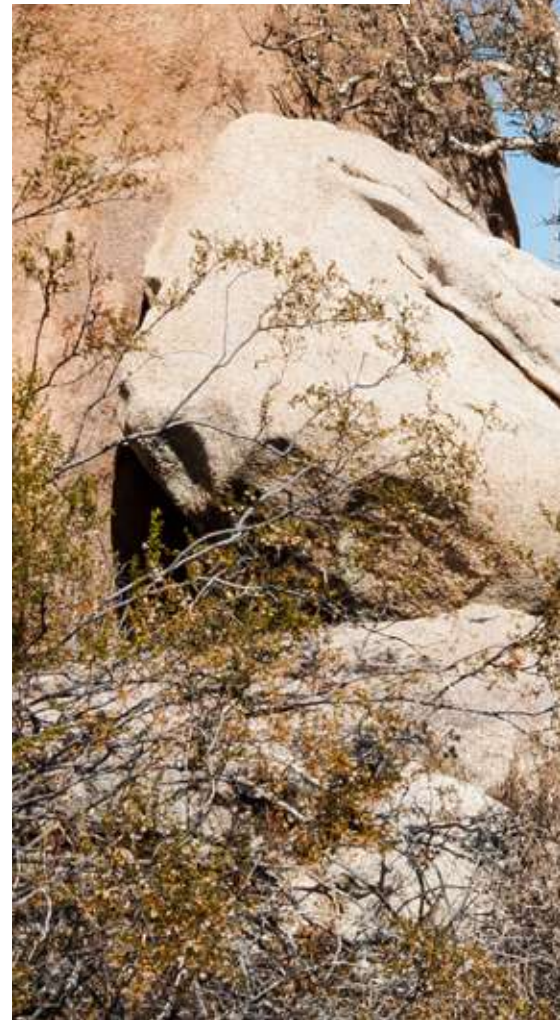


LANDSCAPING

Its location is unique, this development offers a project that lives like a plot. It will let you observe in a single plane the sunrise in the east and sunset over the Pacific Ocean.

Baja Sur is a beautiful garden of torotes (*Bursera microphylla*), freshwater pitayas (*Stenocereus thurberi*), cardones (*Pachycereus pringlei*), white sticks (*Lysiloma candidum*), among others. House of imposing birds, refuge of the humpback whale.

Each species has been carefully chosen to invite the fauna to cohabit and repopulate our gardens and the pollinators to give the user a spectacle of life and color.





CLUB CAMPESTRE

Club Campestre San Jose is a private, gated golf and beach club located in San Jose del Cabo, Mexico. It features an 18-hole Jack Nicklaus-designed golf course, which is consistently ranked as one of the best in the region. The club also offers a wide range of amenities and activities, including tennis courts, a fitness center, a spa, and a variety of dining options.

The beach club is located on the Sea of Cortez, which offers a variety of water sports, and the club also have a private beach area for members and guest.







Club Campestre San Jose is a popular choice for second-home owners, and it is also a popular vacation destination for tourists.

Due to its prime location, it is also considered as a luxury real estate option in the area, with a variety of homes, villas, and condos available for purchase or rent.







A vertical strip on the left side of the page shows a golf course landscape with green grass, a sand trap, and a building in the background under a clear sky.

CLUB CAMPESTRE
GOLF COURSE

Jack Nicklaus

Nicklaus signature 18 hole golf course at Club Campestre San Jose invites you to enjoy the incredible panoramic views, dramatic elevation changes and undulating championship greens created specifically for us, and for this very special piece of property, by one of the great Masters of the game.











The images, texts, products, designs, services, appliances and materials contained in this document are provided without warranties of any kind, whether express or implied, which may vary according to the region and/or location of the Solesta project. Their parent company, subsidiaries or affiliates is not responsible for the use and/or results of the content of this document and does not guarantee that such content is accurate and/or error free. All models, materials, images, products, devices and types are subject to change without notice.



LOS CABOS



SAN JOSÉ DEL CABO, MÉXICO

WWW.SOLESTACABO.COM